



a recognised centre of geoscience excellence

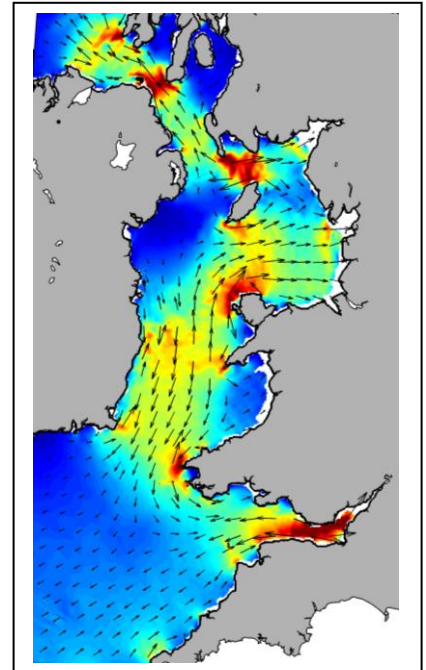


GWL Cluster Meeting Thursday 28th March 2019 - 6:00 for 6:30pm

Can shelf sea sediments be used as a proxy for past tidal conditions?

The Abstract

An understanding of the past is an important tool for projecting potential impacts of future climate change. Past changes in sea levels have had a significant influence on global and shelf sea tidal dynamics, and some of these changes are preserved in marine sedimentary records. This work was focused on exploring a sediment grain size proxy for past tidal current speeds, with focus on the Irish Sea. Using shelf sea sediment core profiles, changes in observed sediment grain size with time were compared with simulated modelled changes in tidal-induced bed shear with time. Did it work? Not very well, but we learned a few things in the process.



The Speaker

Sophie is a physical oceanographer with expertise in numerical modelling. Sophie graduated from the University of Bath and moved to North Wales to work as an environmental consultant. In 2009 she returned to study at Bangor University's School of Ocean Sciences and is now a researcher, applying ocean modelling tools to a range of topics.

Venue: It will be held at The Royal Cambrian Academy, Crown Lane, Conwy, LL32 8AN (located behind Plas Mawr) and will begin at 6:30pm promptly. Refreshments will be served from 6pm

For further information please contact us: on 01492 592425 or admin@geoscience.wales