

## GWL Rhoscolyn Field Trip Tuesday 15<sup>th</sup> July 6pm

Leader: Bill Fitches



### Meeting Place

Meet at the chapel (St Gwenfaens Church, marked P on the map).

### Information and Field Localities

The trip will leave the cars and head SW along a track, towards locality 1. From there we will head SE to locality 7, and walk back northwestwards along the cliff, visiting the locations numbered on the map.

### Excursion Outline

The trip is based around the booklet 'Precambrian Rocks of the Rhoscolyn Anticline', by Margaret Wood. We hope to have some copies of these available for sale at £5 each.

Figure 1: Geology of Anglesey. Based on Greenly's 1920 geology map of Anglesey, courtesy of BGS. Geological interpretation by Dennis Wood and Margaret Wood. Cartography © CCW, 2002. Coastline © Automobile Association, 2002

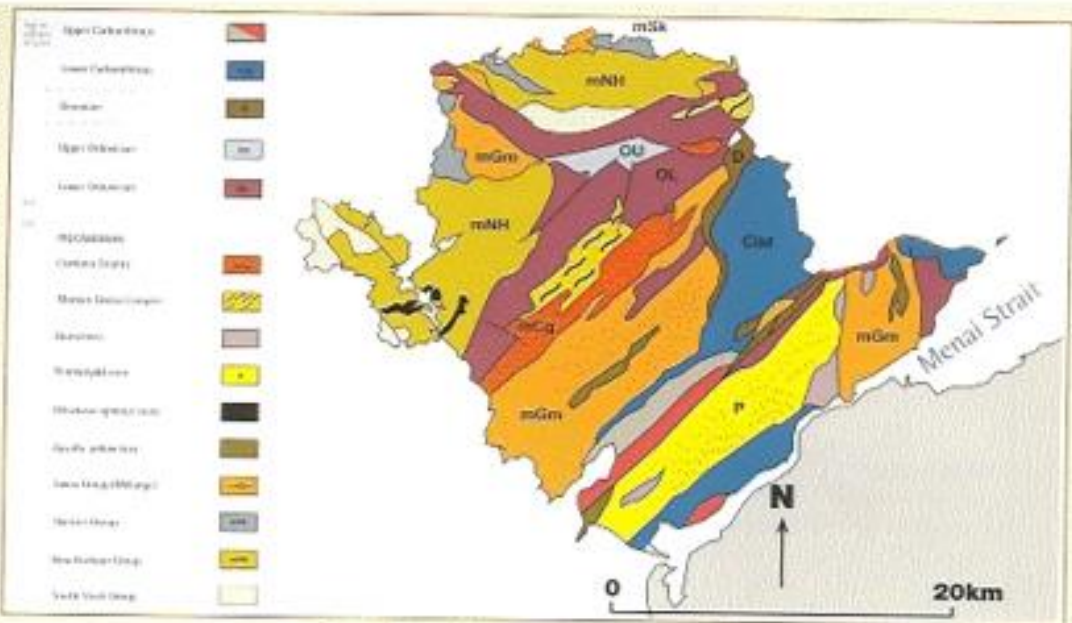


Figure 2: The relationship of the Anglesey sites to other Precambrian outcrops in Wales and the Welsh borders (Horák, J.M. and Gibbons, W. In: Carney et al., 2000)

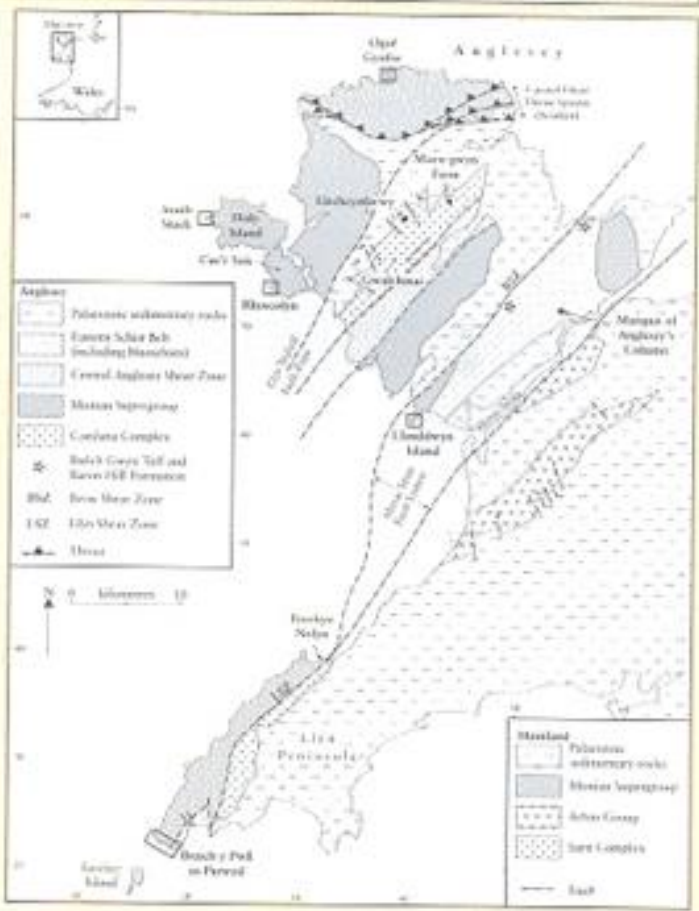
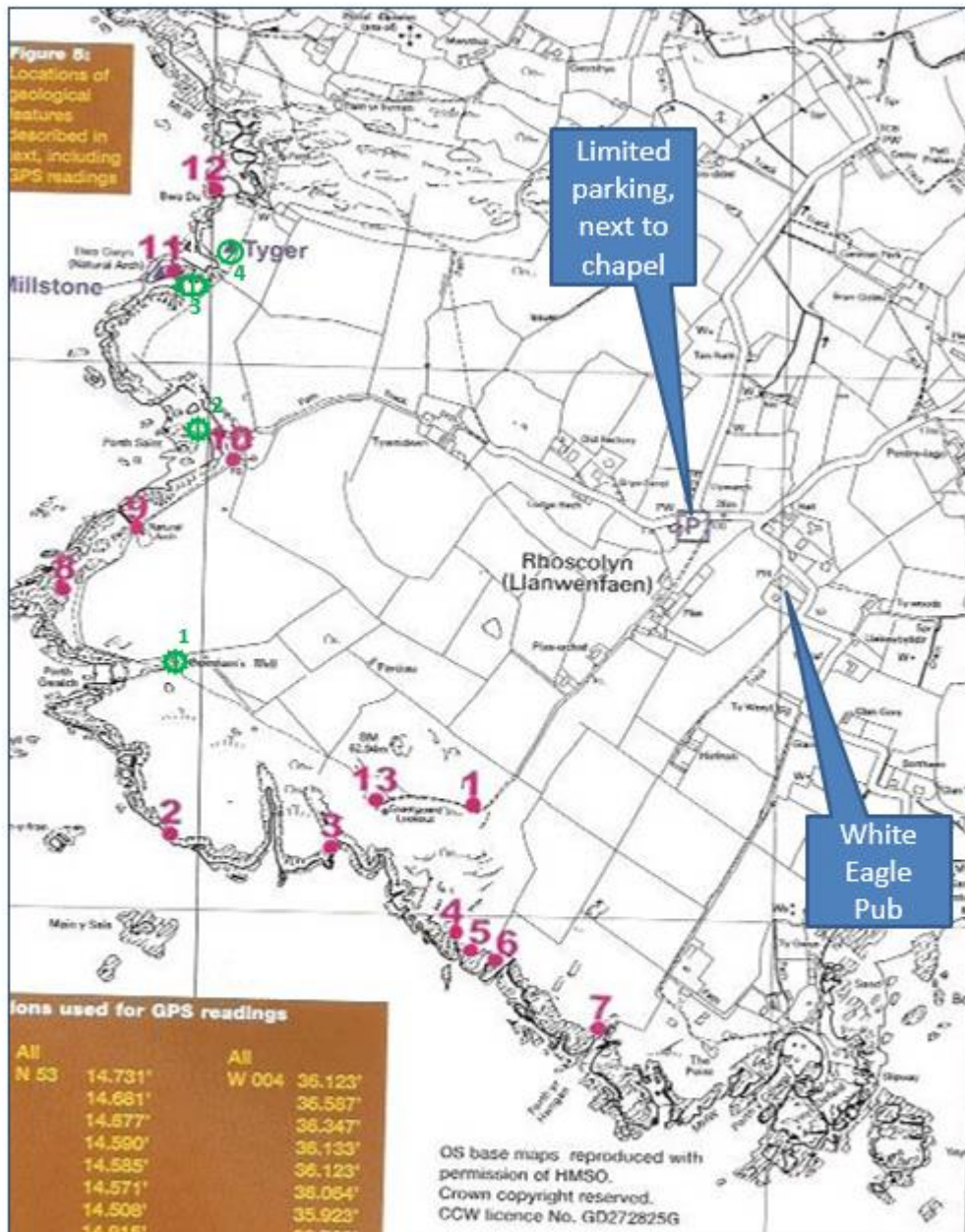


Figure 4: Structural and field data from the Rhoscolyn Anticline (Treagus et al., 2003)

Figure 3: Simplified geology and location of GCR sites (bold lettering) in the Anglesey-Llŷn region. Horák, J.M. and Gibbons, W. In: Carney et al., 2000). Reproduced by kind permission of the authors.





- Rhoscolyn field locations      📍 Other sites of interest

Base map from Wood, M. *Precambrian rocks of the Rhoscolyn anticline*

Geological locations:

1. Quartzite of Holyhead Formation
2. South Stack Fm. Highly contorted mudstones and greywackes with sedimentary deformation form the core of the Rhoscolyn Anticline.
3. Greywackes and schists of Holyhead Fm, overlain by sandstones of Holyhead Fm.
4. Exposures through the south-eastern limb of the Rhoscolyn anticline
5. Folded schists of the Rhoscolyn fm
6. More folded greywackes and schists of the Rhoscolyn Fm

7. *Upper part of the Rhoscolyn Fm; quartzite with sedimentary structures*
8. *Folded (!) rocks of Holyhead Fm, within northwestern limb of Rhoscolyn anticline*
9. *Greywackes of the Rhoscolyn Fm in gully, which emerges inland as a blow-hole.*
10. *Porth Saint. Rhoscolyn Fm, greywackes on the south side, quartzitic sandstones on the north side.*
11. *Fractured quartzites of the Rhoscolyn fm exposed in the White Arch (Bwa Gwyn).*
12. *Northern edge of the Rhoscolyn anticline. Rocks of Holyhead and Rhoscolyn Fms juxtaposed against rocks of the New Harbour Group to the north.*
13. *Dennis Wood Memorial*

*Other sites of Interest:*

- 1 *St Gwenfaen's Well. The structure here is supposed to mark the site of the Saints original 6<sup>th</sup> century cell and holy well. A chambered structure, possibly the most complex of surviving medieval holy wells in Anglesey.*
- 2 *Porth Saint and the Blowhole: supposed landing place of St Gwenfaen and her fellow missionaries in the 6<sup>th</sup> century.*
- 3 *Bwa Gwyn. In the cave at the base of the cliffs are huge fan shaped lobes of feldspar hanging from the cave roof. An old crushing mill stone on the summit testifies to an old extraction industry which once quarried these rocks for kaolinite.*
- 4 *Tygers Memorial. Tyger was a dog who saved the lives of a ships captain, two crew and a cabin boy when the ship struck Maen Piscar and began to sink.*